
(:)

*

(// : // :)

()

(MAE)

/ (STDEV)
()

:

...

.()

()

.()

.()

(:)

(R²)

.()

R²

.()

$$Q_s = aQ_w^b$$

.()

()

)

= Q_s

USBR

)

= Q_w

(

= b a

()

.()

(OK)

()

(CK)

(.)

()

()

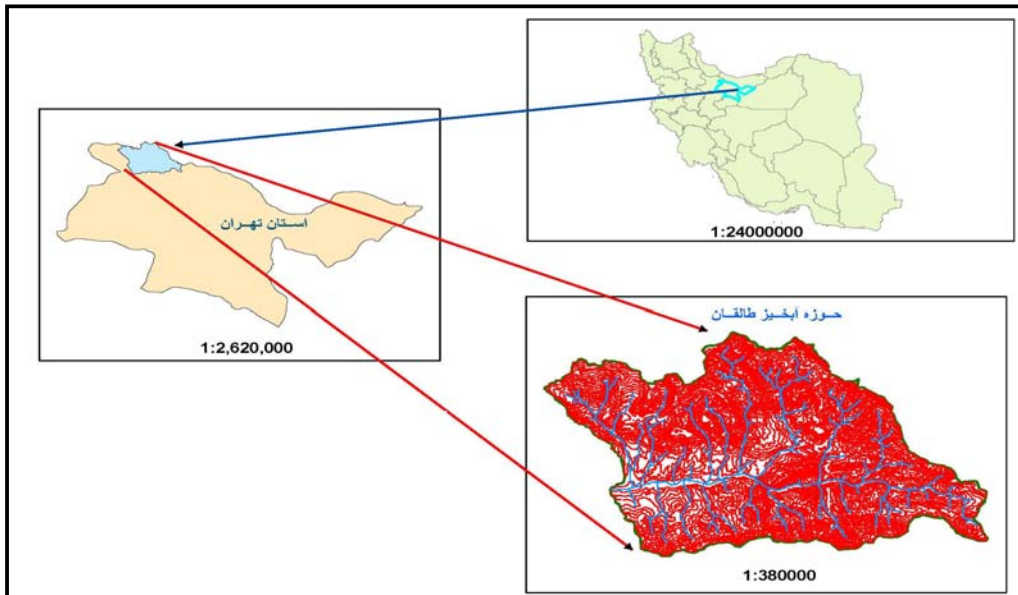
(.)

o / / " /
o / / " /
o / / " /

(.)

(.)

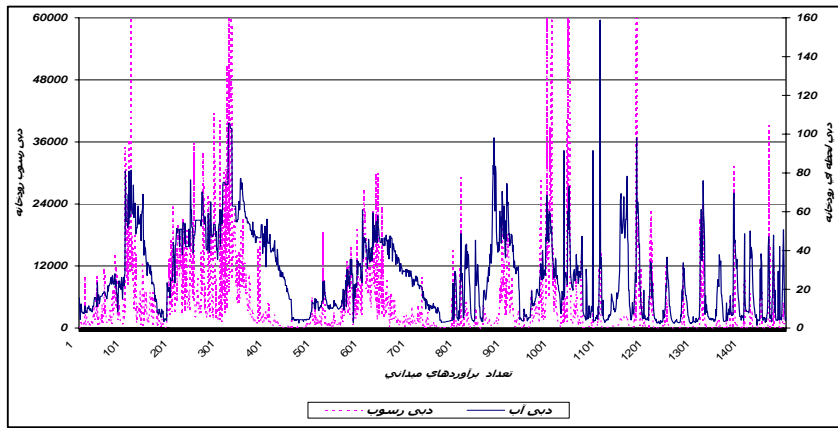
(%)



...

) ()

(



()

) () (

$$Q_s = aQ_w^b$$

()

)

(

(

:

$$= Q_w$$

$$= Q_s$$

()

$$= b \quad a$$

:

:

)

:(

:S

.()

()

$$S^2 = \frac{\sum (\log Q_{soi} - \log Q_{sei})^2}{(n-2)}$$

= $\log Q_{soi}$ = n

= $\log Q_{sei}$ ()

:(CF₂) () LogQ_s ()

:() Q_w Q_s LogQ_w

()

$$CF_2 = \frac{1}{n} \sum 10^{\varepsilon_i}$$

()

$$\varepsilon_i = \log Q_{soi} - \log Q_{sei}$$

()

Q_w Q_s a' :

a a' (

:(CF₁)

.()

(MAE)

(S_TDEV) :()

$$CF_1 = EXP[2/65S^2]$$

()

= | Q_{Sact} - Q_{Sest} | / Q_{Sact}

:

...

/ = /

() : Q_{Sest} : Q_{Sact}

/ .()

CF₁ () CF₂ MAE

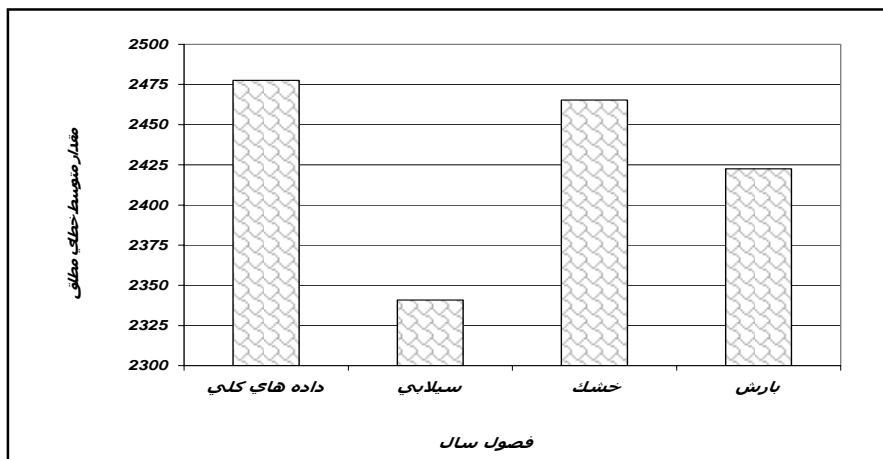
)

()

/ / .()

/ / /

/



			()			
,	,	,	,	,	,	
,	,	,	,	,	,	
,		,	,	,	,	
,	,	,	,	,	,	
,		,	,	,	,	

()

)

()

()

()

()

()

(a)

a

/

()

/

)

(

(%)

()

()

9-Cigizoglu, Kerem.H, 2003, Daily Suspended data by multilayer perceptrons, *Advances in Water Resources*, Vol.27, 185-195.

10- Jansson , M.B.,1996, Estimating a Sediment rating curve of The Reventazon river at Palamo using logged mean loads within discharge classes , *Journal of Hydrology*, No.183 (1994),227-241.

11-Jones.K.R.O.Berney, D.P.Carr, E.C.Barrett, 1981, Arid zone hydrology for agricultural development.FAO Irrigation and drainage paper, No. 37,271P.

12-Koch.R.W. And G.M.Smillie, 1986, Comment on “River Loads Underestimated by rating curves” .*Water Resources Research*, Vol.22, No.13, 2121-2122.

13-Quilbe, R.,Rousseau, A.N.Duchemin, 2006, selecting a Calculation Method to estimate sediment and Nutrient Load in Streams: Application to the Beaurivage River (Quebec, Canada).*Journal of Hydrology*, Vol.326, 296-310.

...

14-Sarangi, A., Madramootoo, C.A., Enright, P., 2005, Performance evaluation of ANN and Geomorphology- based models for runoff and sediment yield prediction for a Canadian Watershed, CURRENT SCIENCE 89 , 12-25.

15-Tomas, R.B, 1985, Estimating total Suspended Sediment Yield with probability Sampling, Water Resources Research, Vol.21, 1381-1388.

16-Zhongwei, Li, You. Kuan Zhang, 2006, Cokriging Estimation of daily Suspended Sediment Loads, Journal of Hydrology, Vol.327, pp 389-398.

Assessment of the effect of classification on the improved estimation of suspended sediment load using hydrological methods (Case study: Taleghan Basin)

A. Zoratipour^{*1}, M. Mahdavi², Sh. Khalighi Sigaroudi³, A. Salajegheh³ and N. Shams Almaali⁴

¹ Ph. D. student, University of Tehran & Instructor of Natural Resources and Agricultural University of Ramin, Ahvaz, I. R. Iran

² Professor, Faculty of Natural Resources, University of Tehran, I. R. Iran

³ Assistant prof, Faculty of Natural Resources, University of Tehran, I. R. Iran

⁴ M. Sc. student, Faculty of Natural Resources, University of Tehran, I. R. Iran

(Received: 6 October 2007, Accepted: 09 August 2008)

Abstract

One of the important issues in design of river structures as well as determination of proper life time is having adequate information of sediment load in the rivers. Thus, several methods have been suggested for estimation of suspended loads. One of the hydrological techniques is rating curves method that is based on the best fitting line to drawing between values of flow discharge and suspended loads respectively. Seasonal variability is one of the errors which origins in sediment rating curves that disregarded to accurate estimation of suspended load. In this research seasonal classification, by analyzing annuals hydrograph on the sampling time with 6 hydrological methods in 3 different seasons for estimated suspended loads and the best fitting method and season was determined in Glinak hydrometric station of Taleghan Basin. The results showed that the quality of primary data is the most important parameter in accuracy and precision of the estimations. However classified total data have considerable affect on decreasing error estimate and also due to the increasing precision (decreases MAE) and accuracy (StDev decreasing) estimates 6 and 77.8%, respectively. Finally, the best determination methods for estimating process in the research which are suitable for total data, two rating curves and FAO methods for rainy season data, CF₂ method for flood season data classes, one rating curve method for dry season class and FAO method. Also, discharge-sediment load data from flooding season are the best seasonal classes among the methods in case of minimum error.

Keywords: Rating curve, Hydrological methods, Suspended load, Seasonal classification, Taleghan Basin, Iran