
*

(// : // :)

()

:



(.)

()

()()

()

/

()

()

()

()

(.)

/

/

/

(1)

(1)

()

()

)
x y (
($T_x = a + bx$)

()

)
(

()

: ()

()

)

(

()

2

)

(

()

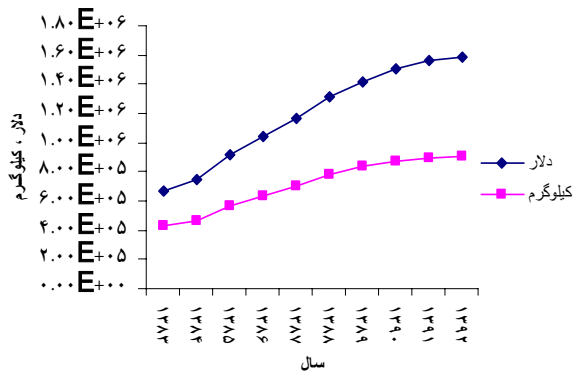
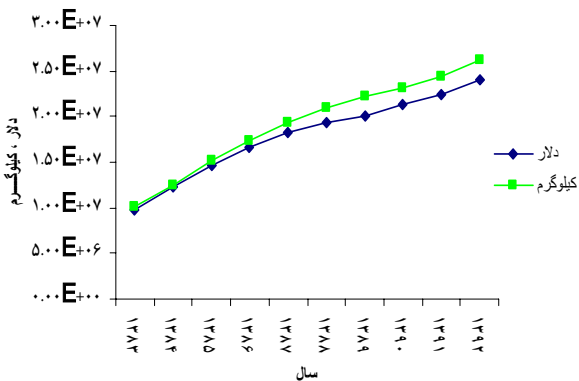
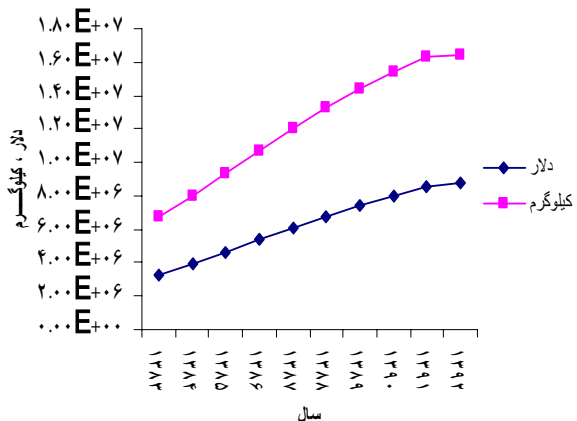
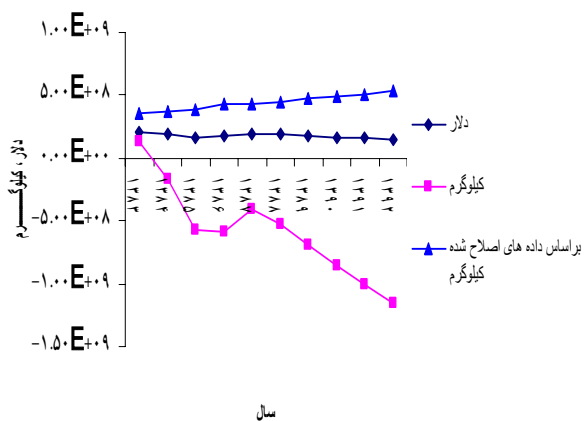
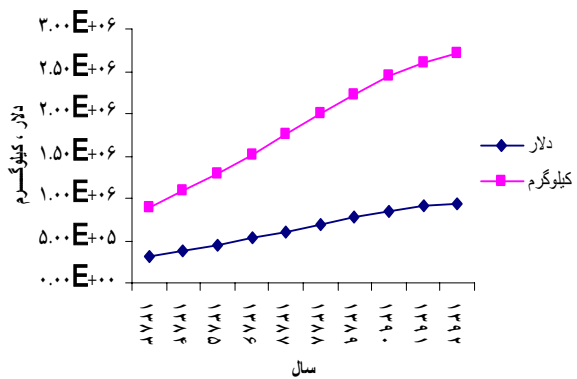
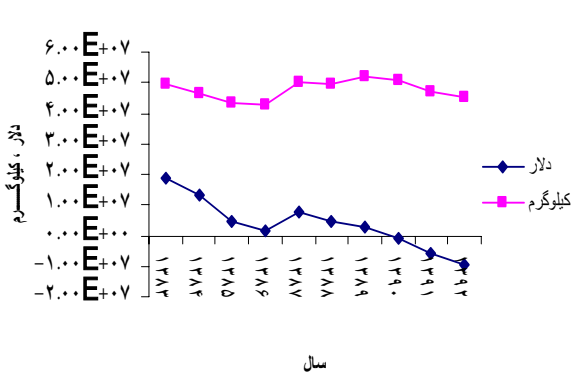
()

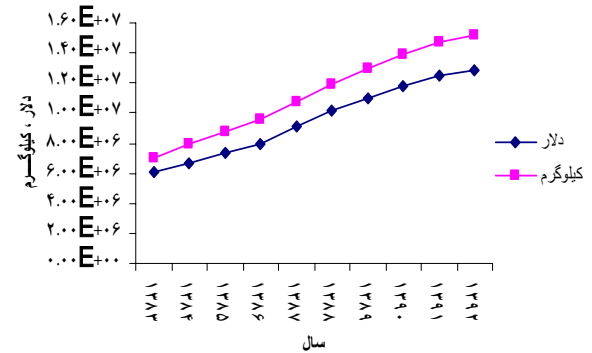
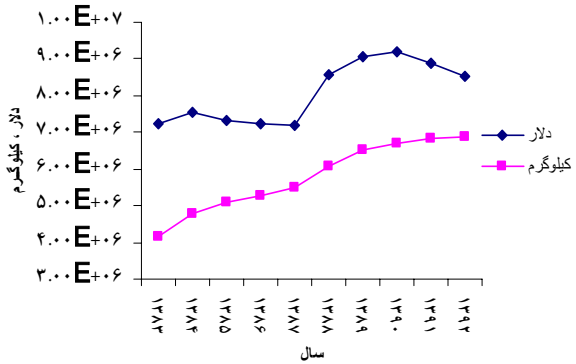
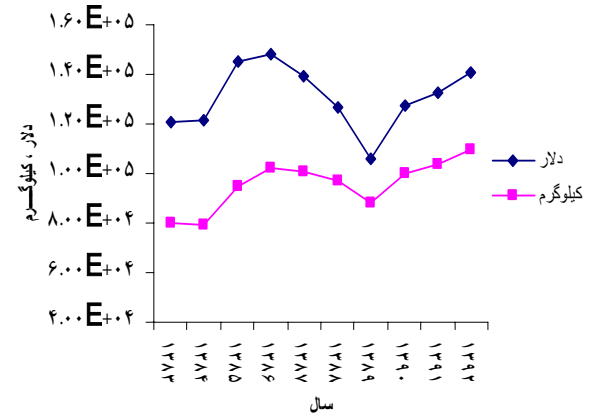
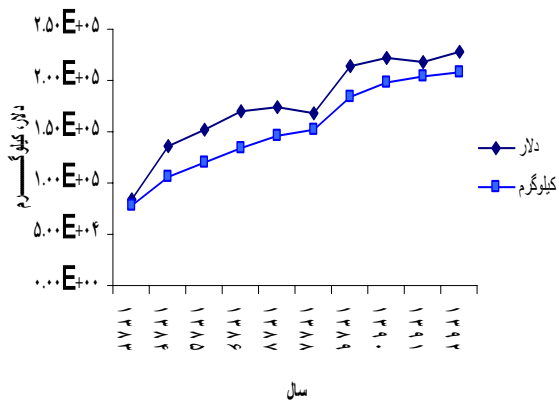
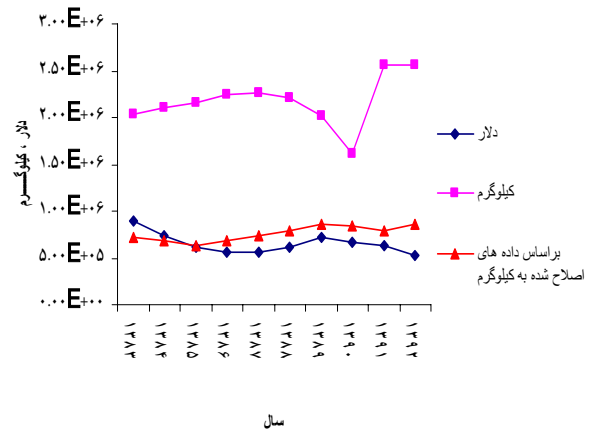
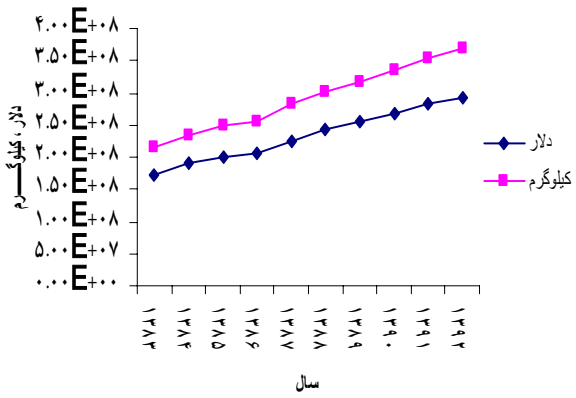
MAD = Mean Absolute Deviation

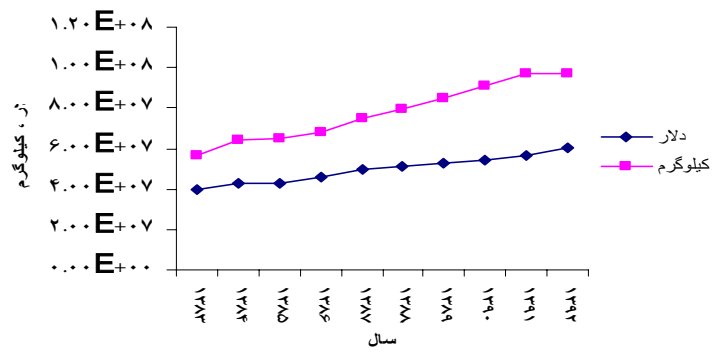
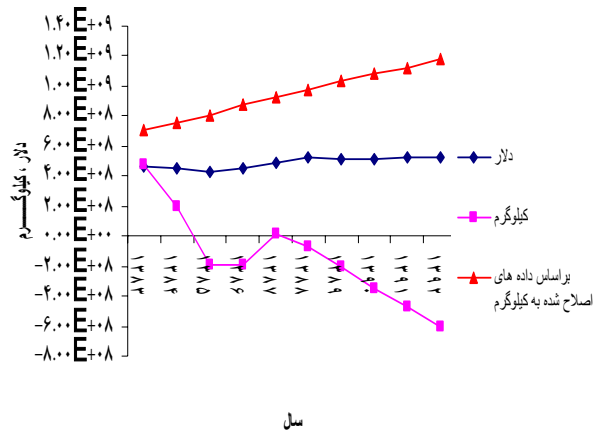
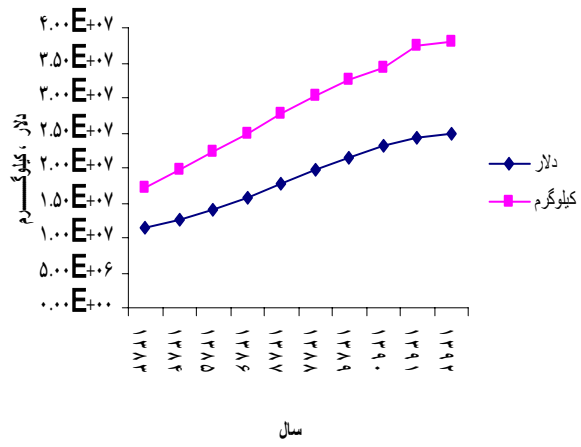
MAPE = Mean Absolute Percent Error

Bias

	()			
	/			
				$Y = 161888X^2 - 10000000X + 200000000 \quad R^2 = 0/6236$ $Y = 1866 / 9 X^{2/9179} \quad R^2 = 0/6752$
	/			
	/			$Y = 21144 X^2 - 245780 X + 879495 \quad R^2 = 0/735$
	/			
	/			$Y = 20000000 X - 9000000 \quad R^2 = 0/8529$
	/			$Y = 80000000 \ln(X) - 30000000 \quad R^2 = 0/7994$
	/			$Y = -520271 X^2 + 20000000 X - 200000000 \quad R^2 = 0/8581$
	/			$Y = 7000000 X^{1/4159} \quad R^2 = 0/8163$
)			
	(
				$Y = 696498 X - 1000000 \quad R^2 = 0/6488$
	/			$Y = 104872 X^2 - 561960 X + 1000000 \quad R^2 = 0/7635$
	/			$Y = 62527 X^{2/0002} \quad R^2 = 0/8944$
	/			
				$Y = 2000000 X - 4000000 \quad R^2 = 0/673$
	/			$Y = 277602 X^2 - 2000000 X + 3000000 \quad R^2 = 0/8027$
	/			$Y = 479654 X^{1/3301} \quad R^2 = 0/8137$
	/			







()

()

()

()

()

)
(

()

()

()

()
()

()

()

()

()

()
()

()

9-Dudly N.and et.at, 1996Pulp Fact Environmental implications of the paper cycle ,WWF international.

10- Eyre j., 2005, situation and outlook for forestry update, New Zealand Ministry of Agriculture and forestry.

11- Gautam M. and et.al, 2000, the challenges of World Bank involvement in forests: an evaluation of Indonesia's forests and World Bank Assistance, preliminary report, operations Evaluation Department. Indonesia.

12-Hetemäkil.and obersteiner.M., 2001,Us Newsprint Demand forecasts to 2020, university of California, Berkeley.

13- Jeffrey B and Robinson.c, 2006, forest and forest products trends, Vermont sustainable Jobs fund, us.

14-Lombard B. and Akim E., 2006, Pulp and Paper Markets, confederation of European paper industries.Belgium.

15-sun-and et.al, 2004, meeting china's demand for forest products: an over view of import trends of entry, and supplying countries, with emphasis on the Asia pacific region. Meeting china's demand for forest products international forestry Review vol.6 (3-4), center for International forestry Research (CIFOR), china.

Pulp, paper and its products export and import trend in Iran

A. Bayatkashkoli*¹, M. Faezipour², A. Abdoulkhani³, O. Ramezani³ and O. Hoseinaei³

¹ Assistant professor, Faculty of Natural Resources, University of Zabol, I. R. Iran

² Professor, Faculty of Natural Resources, University of Tehran, I. R. Iran

³ Ph D. student, Faculty of Natural Resources, University of Tehran, I. R. Iran

(Received: 02 October 2005, Accepted: 20 October 2007)

Abstract

Paper and its products affect on the country's economics. Therefore, type and number investigation is limited and trend estimate of these products is not established. Then, some basic questions arise including the trend of pulp, paper and its products export and import. Since, the research methodologies are analytic, approximate and forecasting methods (trend and regression formulation) were used to establish. The results of trend method are more careful than others. Probably, the products imports will be over 500 million and exports will be over 20 million US dollars in next years (after 2008). Newsprint, cardboard and paper, wrapping exports and also sanitary paper and substantial cardboard as well as paper imports will have increasing trend. Imports trend by value and weight is not relevant in some orders, probably because these amounts are decreasing and these products change to depreciate tariff. Pulp imports must increase because limited pulping material resources, pulp making products. Then export and import of these products will increase in next years. Since, internal requirement will provide and redundant will export and increase proceeds.

Keywords: Trend, Regression formula, Pulp and paper, Imports and exports