
(Viscum album L.)

*

(// : // :)

(Viscum album L.)

()

Viscum album :

...

.()

V. album

.()

.()

Viscum album L.

)

Viscaceae

.(

.()

()

Lopez

()

.()

.()

.()

Turdus viscivorous

Sylvia atricapilla

.()

)

(

-
- Mistletoe
 - Stem Hemiparasite
 - Cell to cell
 - Haustorium
 - European Mistletoe
 - Mistle Trush
 - Black Cap

Open Area

()

(*Carpino – Quercetum*)

Carpino) (*Alnetum – Glutinosa*)

Carpinoi –) (*Parroitem –*

Gleditschio –) (*Alnetum*

(*Alnetum*

|

)

(

Chi-Square

)

)

.(

d.f. = $P = /$)

.($X^2 = /$

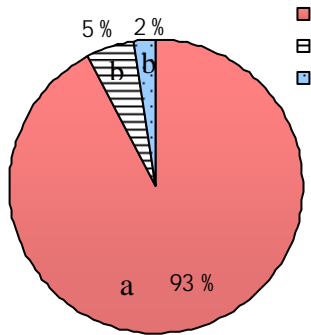
(

SPSS

EXCEL

...

/				
/				
/				
/				
/				
/				
/				
/				
/				
/				
/				
/				
%				



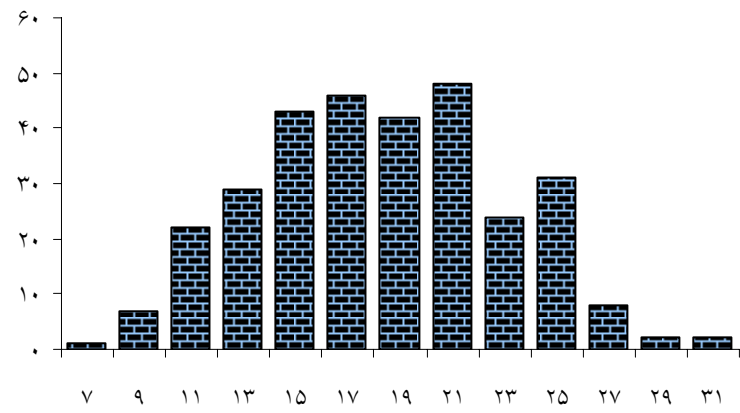
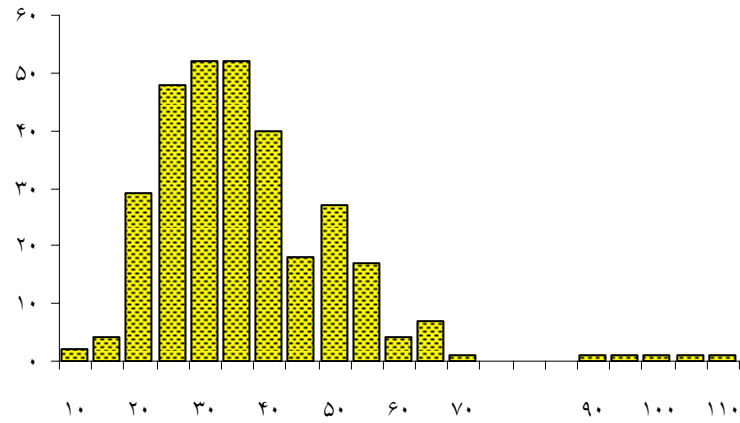
($P = /$)

Mann-Whitney U

)

(

($P = /$)



...

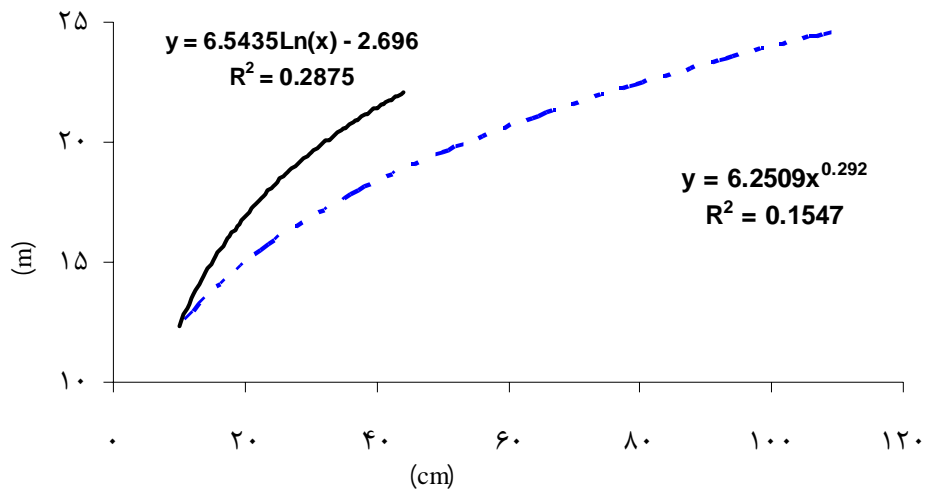
N	R	P		
	** /	/		
	ns /	/		

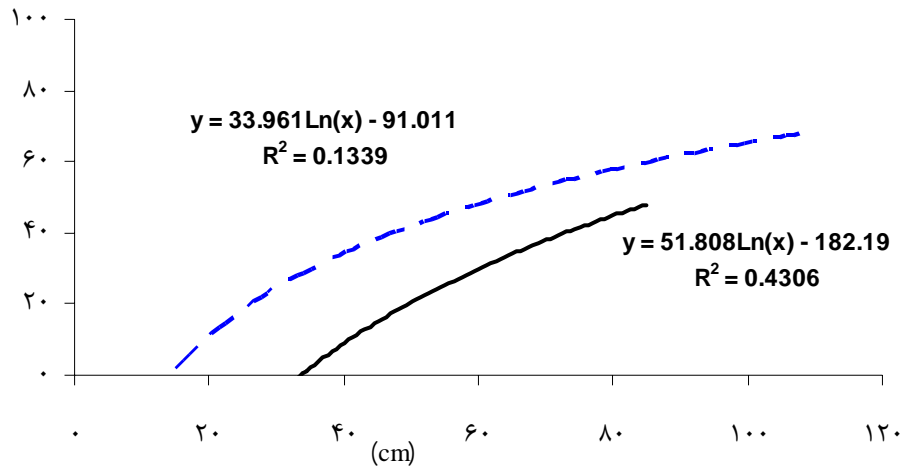
()

N	R	P		
	** /	/		
	ns /	/		

ns %

**





()

Generalist Parasites

($P = /$)

Specialist

Parasites

()

ANCOVA

()

()

()

x

.()

((ANCOVA

<i>p</i>	<i>F</i>				(
/	/ ns	/	/		
/	/ **	/	/		
/	/ ns	/	/		×
		/	/		
/	/ *	/	/		
/	/ **	/	/		
		/	/		
					(
/	/ ns	/	/		
/	/ ns	/	/		
/	/ ns	/	/		×
		/	/		
/	/ ns	/	/		
/	/ ns	/	/		
		/	/		

ns % %

* **

(
.()
)

3- Barberaki, M. & S. Kintzios, 2002. Accumulation of selected macronutrients in mistletoe tissue cultures: effect of medium composition and explant source, *Scientia Horticulturac*, 95: 133-50.

4- Briggs, J. 2003. Christmas curiosity or medical marvel? a seasonal review of mistletoe, *Biologist*, 50(6):249-54.

5- Christenson, J.A., D. Young, & M.W. Olsen, 2003. True mistletoe, the University of Arizona, Publication AZ, Onlineat: <http://www.ag.arizona.edu/pubs/diseases/az1308.pdf> .

6- Lopez de Buen, L., F.J. Ornelas, & G. Garcia-Franco, 2001. Mistletoe infection of trees located at fragmented forest edges in the cloud forests of central Veracruz, Mexico, *Journal of Forest Ecology and Management*, 164: 293-302.

7- Martinez, D.R.C., A. Silva, R. Medel, & M. Hourdequin, 1996. Seed disperser as disease vector: bird transmtion of mistletoe seeds to plant hosts, *Ecology*, 77:912-21.

8- Mathiasen, R.L. 1998. Infection of young western larch by larch dwarf mistletoe in northern Idaho and western Montana, *Western Journal Applied Forestry*, 13(2): 41-45.

9- Milius, S. 2000. Botany under the mistletoe, *Week of Dec. 23, 158 (26/27)*, Online at: <http://www.sciencenews.org/articles/20001223/bob9.asp> .

10- Norton, D.A. & M.A. Carpenter, 1998. Mistletoe as parasites: host specificity and speciation. *Elsevier Science LTD*, 13(3): 101-03.

11- Nickrent, D.L. & L.J. Musselman, 2004. Introduction to parasitic flowering plants, *The Plant Health Instructor*, 16 pp.

12- Norton, D.A. & N. Reid, 1997. Lesson in ecosystem management from management of threatened and pest Loranthaceous mistletoes in New Zealand and Australia, *Conserv. Biol.*, 11: 759-69.

13- Norton, D.A. & S.M. Smith, 1999. Why might road side mulgas be beter mistletoe hosts?, *Australia Journal of Ecology*, 24, 193-98.

14- Ochocka, J.R. & A. Piotrowski, 2002. Biologically active compounds from european mistletoe (*Viscum album* L.), *Can. J. Plant Pathol.*, 24: 21-28.

-
- 15- Parks, C.G., E.L. Bull, R.O. Tinnin, J.F. Sheoherd, & A.K. Blumton, 1999. Wildlife use of dwarf mistletoe brooms in douglas-fir in northeast Oregon, *Western Journal of Applied Forestry*, 14(2): 100-105.
- 16- Watson, D.M. 2001. Mistletoe –A key stone resource in forests and woodlands worldwide, *Annual Review of Ecology and Systematics*, 323, 219-249.
- 17- Watson, D.M. 2002. Effects of mistletoe on diversity: a case study from southern New SouthWales, *Emu*, 102, 275-281.
- 18- Zuber, D. & A. Widmer, 2000. Genetic evidence for host specificity in the hemi-parasitic *Viscum album* L. (Viscaceae), *Molecular Ecology*, 9:1069-1073.
- 19- Zuber, D. 2004. Biological flora of central europe: *Viscum album* L., *FLORA*, 199: 181-203.

Investigation of the Relationship between Infection Intensity to mistletoe (*Viscum album* L.) with Some Host Species Features in Nour Forest Park

D. Kartoolinejad^{*1}, S. M. Hosseini², S. K. Mirnia³, M. Akbarinia⁴ and F. Shayanmehr¹

¹ M.Sc. Graduate, Faculty of Natural Resources, Tarbiat Modarres University, I. R. Iran

² Associate Prof., Faculty of Natural Resources, Tarbiat Modarres University, I. R. Iran

³ Associate Prof., Faculty of Agriculture, Tarbiat Modarres University, I. R. Iran

⁴ Assistant Prof., Faculty of Natural Resources, Tarbiat Modarres University, I. R. Iran

(Received 21 June 2006, Accepted 10 September 2007)

Abstract

In order to investigate the relationship among mistletoe (*Viscum album*) infection intensity with some parameters, such as host species, DBH, height and location of host trees in Nour Forest Park, the number of 30 circular plots with an area of 1000 m² were selected and sampled in regions had an aggregation of infected trees. In each plot, diameter at breast height, number of mistletoe's clumps per each tree and trees location (in two conditions, adjacent to gap and inside of stand) and either host species for all infected to mistletoe individuals were recorded. The results revealed that mistletoe abundance and infection intensity in Iron Wood trees were more than the other species in the study area. Furthermore, infection intensity to mistletoe in Iron trees had a direct significant relation with DBH and locating at edge of forest stand, but there was no relation with trees' height as well. Totally, trees located at the edge of gap or adjacent to roads were more either in abundance or infection intensity than interior trees. This result shows that opening stand due to intense harvesting and also forest destruction can increase the potential of infection to mistletoes in each region.

Keywords: Mistletoe, Parasitic plant, *Viscum album*, Ironwood tree, Hyrcanian forests

* Corresponding author: Tel: +98 122 6253101 , Fax: + 98 261 2227765 , E-mail: kartooli58@yahoo.com