
(NSSC)

*

(/ / : // :)

%

CSF

% % + %)

%

/ /

CSF

(% + % % + %

%

NSSC

:

...

.() NSSC

NSSC

NSSC

.()
(NSSC)

.()

(NSSC)

()

.()

PH

.()

.()

(NSSC)

.()

(Paulownia fortunei)

NSSC

.()

% /

% /

)T om

% + % :

% + % % + %

(

: TAPPI

T om

T om

T om

T om

: / :L/W

T om

(RCT)

T om

T om

T om

spss

± CFS

PFI

					()
					()

/	/	/	/	()	()
/	/	/	/		
/	/	/	/	()	()
/	/	/	/		

.()

264om-88

T T_{224om-88} T_{204om-88}

	()		
/	/		
/	/		
/	/		
/	/		
/	/		
/	/		
/	/		

(NSSC)

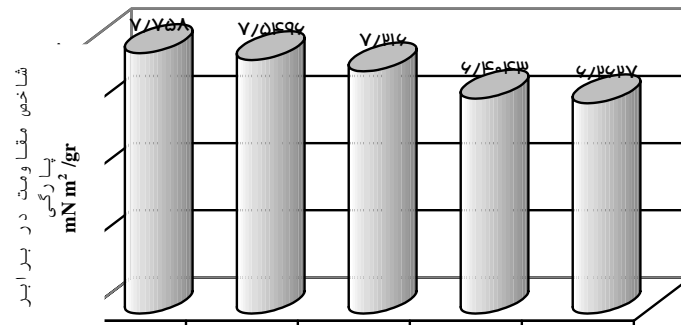
()	()	()	()	()	
/					
/					

()
 %
 %

% + %
 % + %

	F				
/	/	/	/		
		/	/		
			/		

%



۱۰۰٪

=P =A

% + % %

)

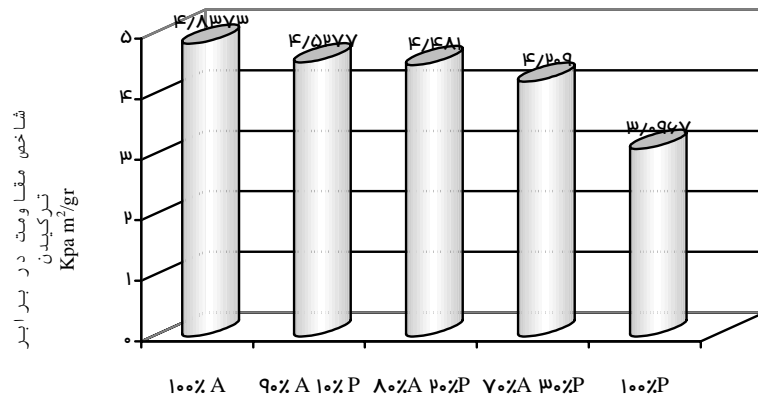
%

%

(

	F				
/	/	/	/		
		/	/		
			/		

%



=P =A

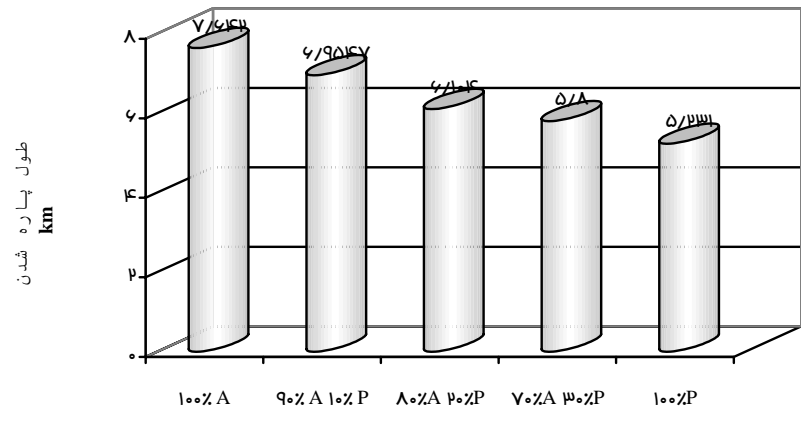
()
%
%

%

% + %

	F				
/	/	/	/		
		/	/		
			/		

%



=P =A

(
%)

%

%

% + %

% +

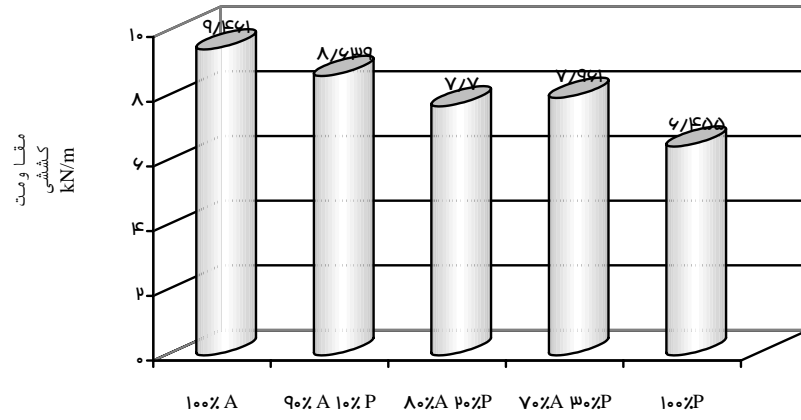
%

)

	F				
/	/	/	/		
		/	/		
			/		

%

...



=P =A

%

% + %

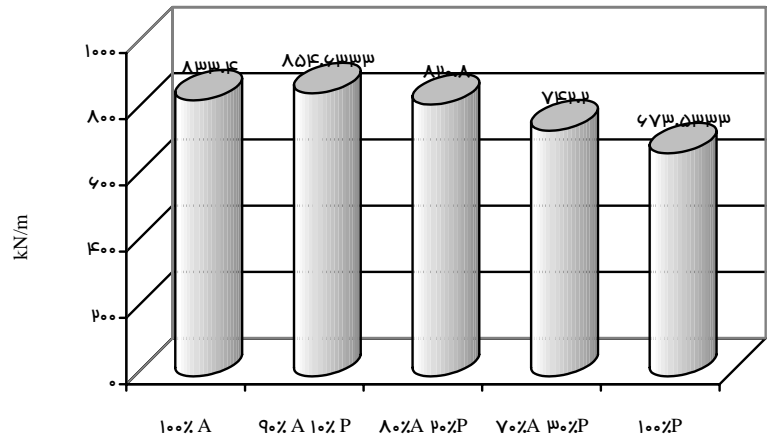
% + %

% + %

(%)

	F				
/	/	/	/		
		/	/		
			/		

%

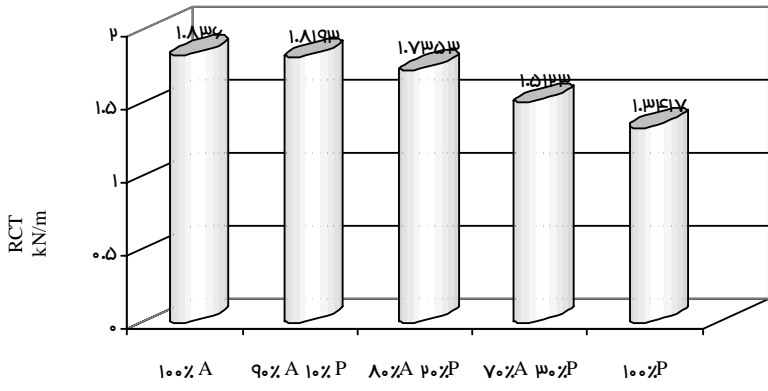


=P

=A

	F				
/	/	/	/		
		/	/		
			/		

%



P

A

...

:

(RCT)

%

%

(RCT)

%

NSSC

%

(*Paulownia fortunei*)

3- Area, M. C., Felissia, F. E., Venica, A., and Valade, J. L., 2001. NSSC process optimization: pulping, pulps and spent liquors, TAPPI JOURNAL, April 2001, Vol. 84(4)

-
- 4- Area, M. C., Felissia, F. E., Venica, A., and Valade, J. L., 1998.NSSC Process Optimization: II. Spent Liquors, 1998 Pulping Conference Proceedings
 - 5- Bormett, D.W., D.I. Fahey & J.F. Launorie ,1981.Use of oak in linerboard, Forest Service, Forest Laboratory, Research Paper, FPL410.
 - 6- Gray C. Myers, Rodger A. Arola, Richard A. Horn, and Theodor H. Wegner, 1996. Chemical and mechanical pulping of aspen chunkwood, mature wood, and juvenile wood, TAPPI JOURNAL, December 1996, Vol. 79(12)
 - 7- Law, K. N., Vald, J. L., Rioux, S., and Lanouette, 1997. Wood and Paper Properties of Five Short-Rotation Poplar Clones Grown in Quebec, 1997 Pulping Conference Proceedings
 - 8- Negi, A., 1983. Influence of wood properties of some Poplar and Willow clones on the characteristics of NSSC process. Symposium on improvement of production and processing of Poplar and Willow wood in croatia, Yugoslavia.
 - 9- Paulownia- response, 2004....FredWright <fwright@SCESCADE.NET
 - 10- Urmanbetova Aselia, 2001. Type ofPaper and Containerboard, Containerboard Grades and tests, Glossary of Mead Corporation available: <http://www.mead.com>

Comparative Study on Properties of Paper Produced from Different Ratio of Poplar and Paulownia Species using Neutral Sulfite Semi Chemical (NSSC) Process

E. Afra^{*1}, S.Z. Hosseini² and H. Resalati³

¹ Ph. D. Candidate of Wood and Paper Sciences and Industries, Faculty of Natural Resources, University of Tehran, I. R. Iran

² Professor, Faculty of Forestry and Wood Technology, Gorgan University of Agricultural Sciences and Natural Resources, I.R. Iran

³ Associate Prof, Faculty of Forestry and Wood Technology, Gorgan University of Agricultural Sciences and Natural Resources, I.R. Iran

(Received 10 April 2005, Accepted 4 February 2006)

Abstract

The purpose of this research is to investigate characteristics of the paper made of Paulowina tomentosa and Populus deltroides. Anatomic and chemical properties of the fiber of these plant species were measured at first. According to the measurements, Paulowina tomentosa and Populus deltroides, with average fiber lengths 1,064.60 mc and 977.606 mc, respectively, are categorized as broad-leaved threes with medium fiber length. As compared to Paulowina, Populus deltrioids contains more cellulose and less lignin and extractives. Cooking the paste was performed according to the NSSC process and the wood was treated with 15% sodium sulfite and 7% sodium bicarbonate based on the o.d. weight of the wood material. Regarding the optimum freeness for the NSSC process, freeness of 409 CSF was obtained for Paulowina pulp at the 7,200 rpm while this index was 415 CSF at 3,600 rpm for Populus pulp. The variable in this research was the percentage of the two components in the processed pulp (100% of each species, 90% Populus deltroides + 10% Paulowina tomentosa, 80% Populus deltroides + 20% Paulowina tomentosa, 70% Populus deltroides + 30% Paulowina tomentosa). Investigation on these paper characteristics shows that adding paulownia to pulp up to 10 percent is acceptable and it doesn't affect the strength characteristics of the paper in comparison with the paper of made exclusively of Populus pulp. On the other hand, adding 20% of Paulowina paste to the pulp up to 20% reduces strength characteristics, including burst strength, breaking length and tensile strength but doesn't affect some other strengths such as tear strength and ring crush (RCT).

Keywords: Paulownia , Neutral Sulfite Semichemical pulp , Freeness , Refining.